

Migration from AppBuilder to OEA

A quick start guide

Mike Fechner, Consultingwerk Ltd.

Agenda

- A (short) review of OpenEdge Architect
- Understanding AppBuilder environments
- Creating a workspace
- (Personal) preferences in OpenEdge Architect
- Creating a first project
- Creating a run configuration
- When to use multiple projects and 10.2B's SharedAVM
- Some useful keyboard shortcuts

OpenEdge Architect

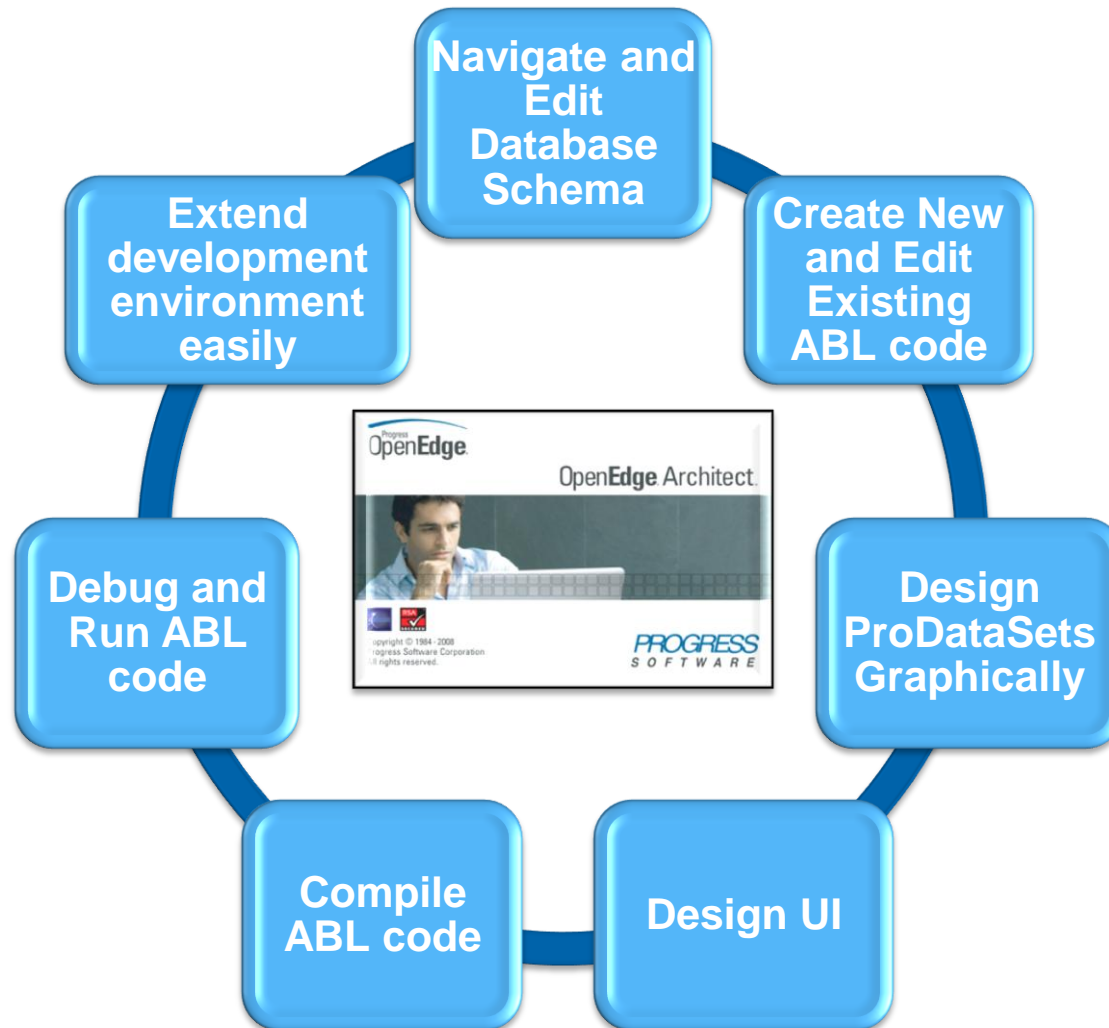
- Eclipse based extensible IDE available since 10.1A (continuously enhanced since then)
- Alternative to the AppBuilder
- Requires a separate license (included in PSDN SDK)
- AppBuilder is integrated
- Extensible using 3rd party plug-ins (commercial, community based)
- Successful adoption requires acceptance of Eclipse paradigms

OpenEdge Architect

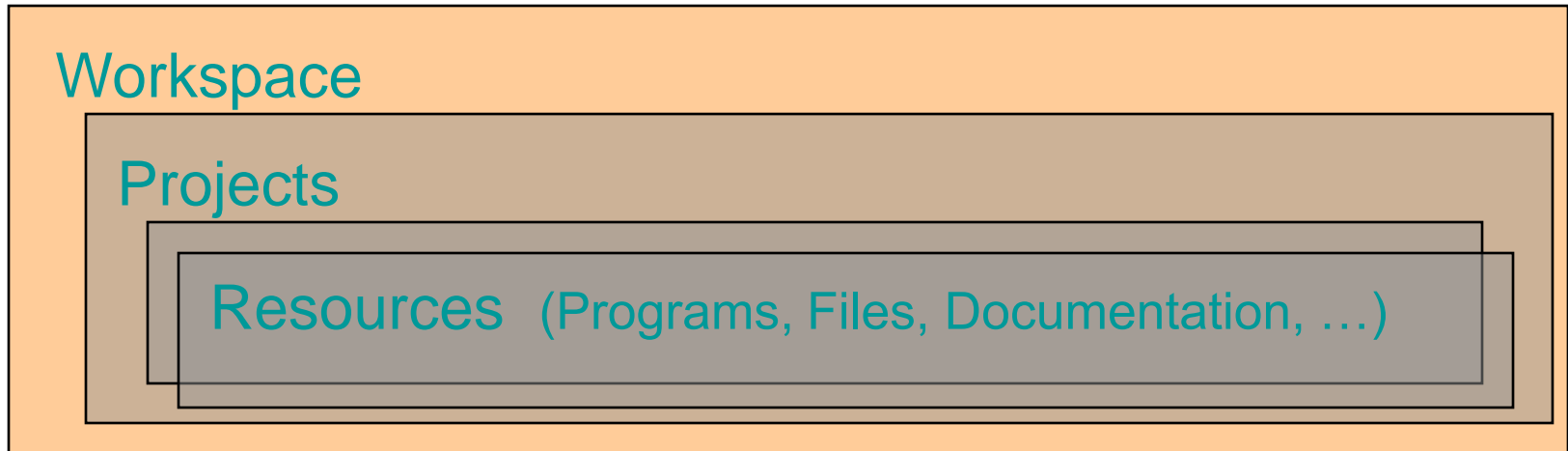
- Eclipse works best with local source code
- SCM plug-ins (team providers) are the way to do team work
- Shared network folders with source code are not recommended (at least by myself)

- OEA adoption may go along with introduction of a SCM tool
 - SVN, Perforce, Roundtable, MS TFS, ...

What is OpenEdge Architect



OpenEdge Architect Resources



- All objects are contained in a workspace
- Resources are accessible only in the context of a project

Agenda

- A (short) review of OpenEdge Architect
- Understanding AppBuilder environments
- Creating a workspace
- (Personal) preferences in OpenEdge Architect
- Creating a first project
- Creating a run configuration
- When to use multiple projects and 10.2B's SharedAVM
- Some useful keyboard shortcuts

Understanding AppBuilder environments

- AppBuilder is an ABL application, prowin32.exe
- Typically launched from `-p` parameter
 - `-p _ab`
 - `-p _desk`
 - `-p icfstart.p` (Progress Dynamics)
 - `-p Roundtable`
 - `-p your-environment.p`

Understanding AppBuilder environments

- Places to configure AppBuilder
 - Startup parameter (shortcut, .pf files)
 - .ini file, windows registry ☹
 - custom startup procedure

Understanding AppBuilder environments

- **PROPATH: ini file, registry**
- **Database connections: .pf file or startup parameter**
 - single user connection sufficient
- **Memory settings: .pf file or startup .pf**
- **Fonts and colour settings: ini file, registry**

Test configuration

- From within AppBuilder
 - Just 'run' .w from AppBuilder, F2 in procedure editor
 - RUN statement
 - ProTools icon
- External (requiring additional DB connection)
 - Separate icon, when login to app is required
 - RUN statement from procedure editor

Understanding AppBuilder environments

- Please tell me when YOU start your AppBuilder differently...

Agenda

- A (short) review of OpenEdge Architect
- Understanding AppBuilder environments
- **Creating a workspace**
- (Personal) preferences in OpenEdge Architect
- Creating a first project
- Creating a run configuration
- When to use multiple projects and 10.2B's SharedAVM
- Some useful keyboard shortcuts

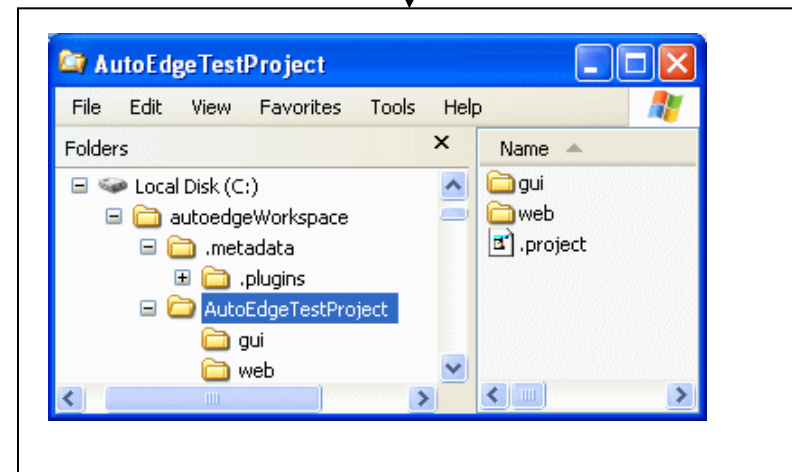
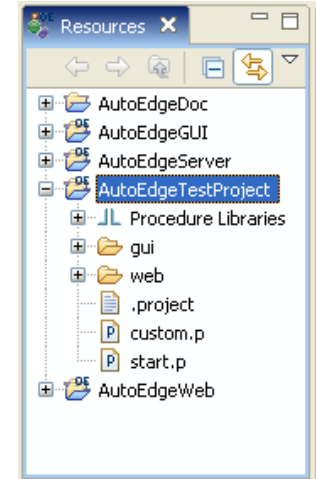
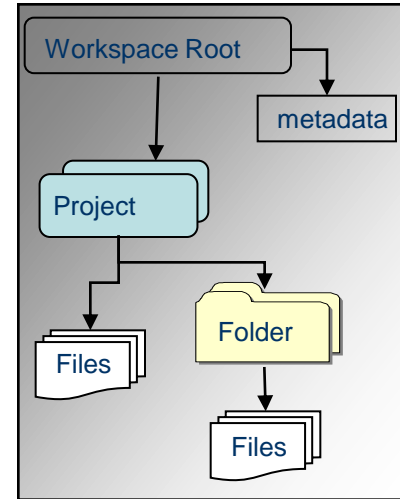
Workspaces in OpenEdge Architect

What is a Workspace?

- A physical directory containing projects, folders, files and state data
- Multiple projects of different kinds can co-exist in the same workspace e.g. OpenEdge, Web, Sonic etc...

Why have multiple workspaces?

- Different applications
- Different releases
- Different environments: development, testing, deployment



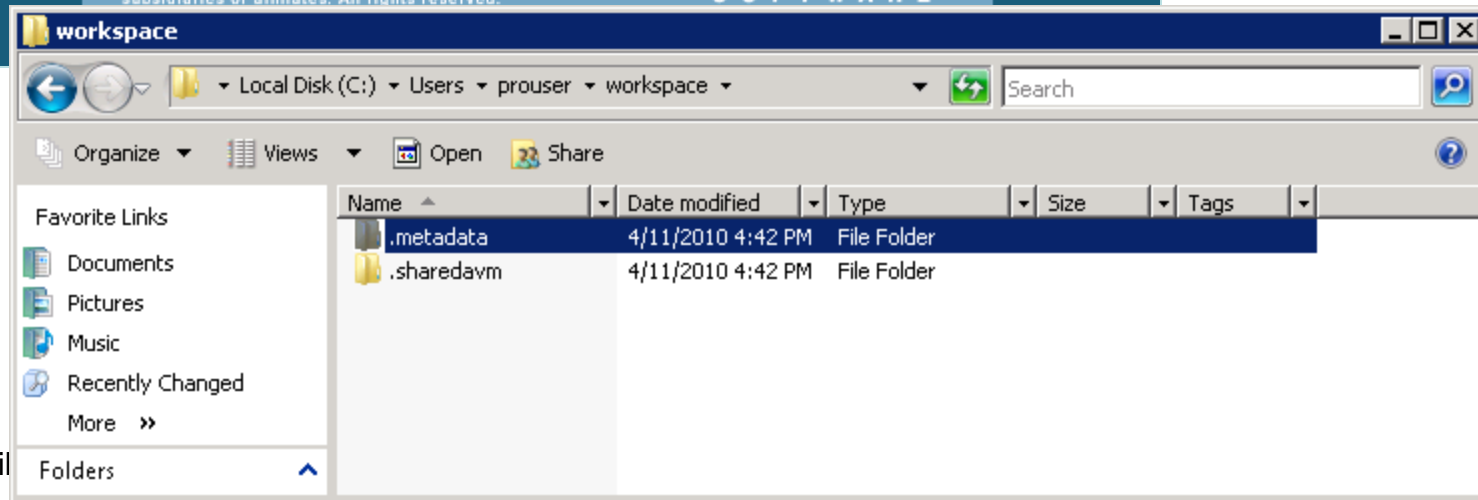
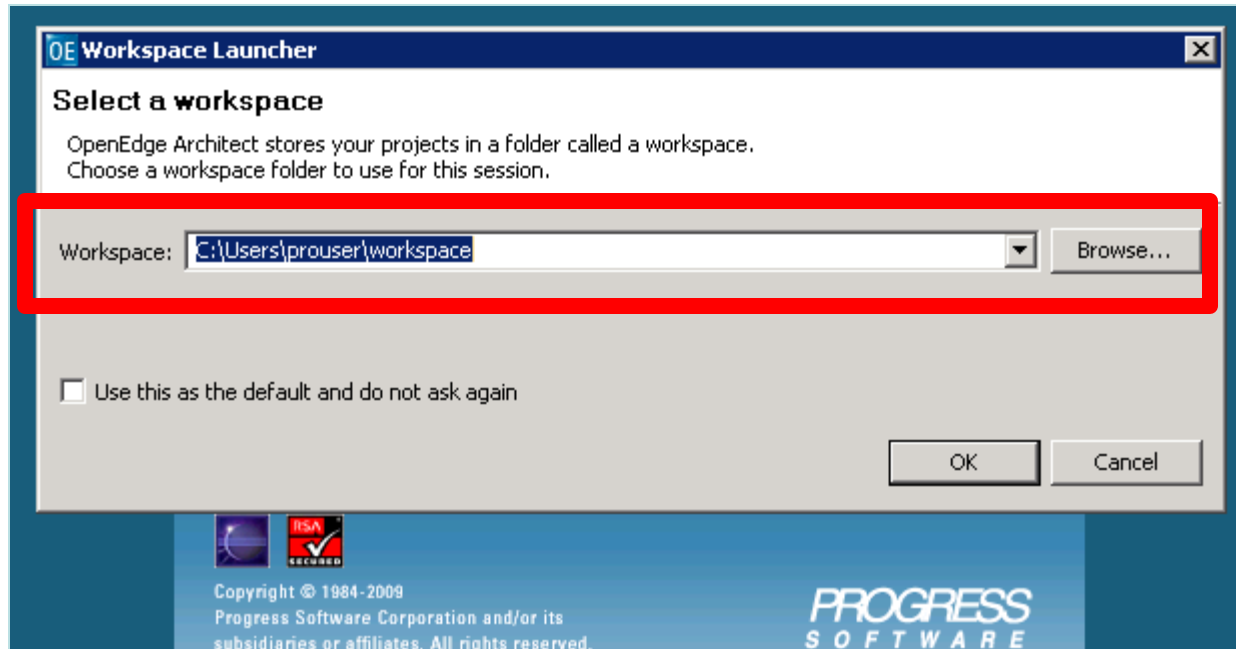
Workspaces in OpenEdge Architect

- A **workspace** is referenced by a physical folder on your hard drive, should be considered:
 - local and private to a single developer (and machine)
 - an important resource (backup)
- Contains most configuration information made in OpenEdge Architect
- Contains **.metadata** directory – don't touch that!

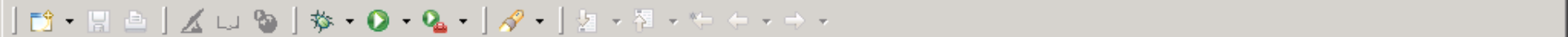
Workspaces in OpenEdge Architect

- A workspace will be created when you open it (.metadata folder)
- Workspaces can be moved to a different folder (even on another computer)
- Workspaces should not cross-mixed between different OpenEdge releases
- Update of workspace is possible, just open it from a **newer** release of OpenEdge Architect
- The location of the workspace is really not important to anything but yourself

Create a new workspace and explore it!







Resources

A panel titled "Resources" with a toolbar containing navigation icons (back, forward, refresh, list, search) and a large white rectangular area below it.

An outline is not available.

A large, empty, light gray rectangular area that serves as the main workspace for editing or viewing content.

No consoles to display at this time.

Workspaces in OpenEdge Architect

- Workspace is locked when used by an instance of Eclipse / OpenEdge Architect
- Workspace contains also configuration of Window Layout, font sizes, and abuse of colors (when you're Tom Bascom 😊)

Workspaces in OpenEdge Architect

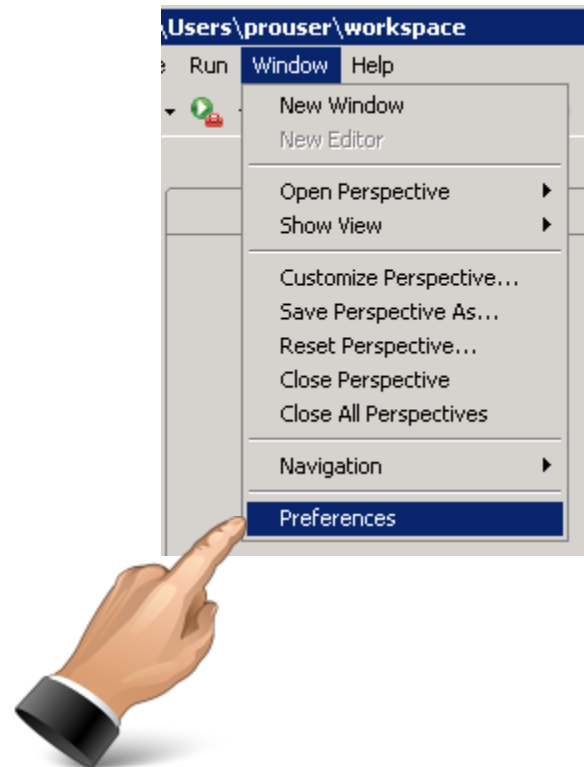
- Demo:
 - Views and perspectives in OpenEdge Architect
 - How to move them around
 - How to open and close them

Agenda

- A (short) review of OpenEdge Architect
- Understanding AppBuilder environments
- Creating a workspace
- (Personal) preferences in OpenEdge Architect
- Creating a first project
- Creating a run configuration
- When to use multiple projects and 10.2B's SharedAVM
- Some useful keyboard shortcuts

Workspace preferences in OEA

- Main menu-bar, Window -> Preferences



Workspace preferences in OEA

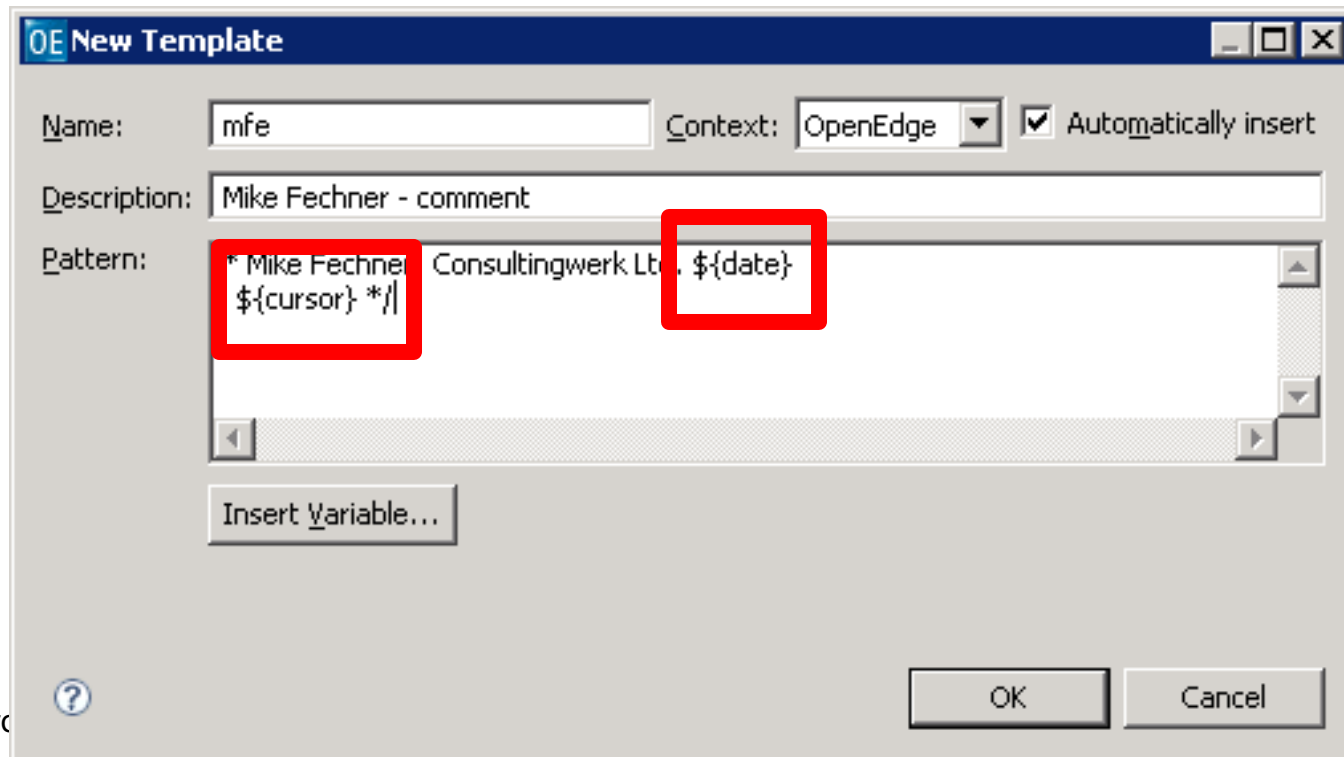
- General – Editors – Text Editors
 - Insert spaces for Tabs, Tab width, show line numbers
- General – Search
 - Reuse editors ... turned off
- OpenEdge Architect – Editor
 - As you type: Case keywords, depending on your style: expand keywords

Workspace preferences in OEA

- OpenEdge Architect – Editor – Build
 - Auto check syntax (while typing)
 - Maximum number of errors reported per build: much higher than 100 (100,000) when you have
 - templates or scratch files
 - migration routines that never compile

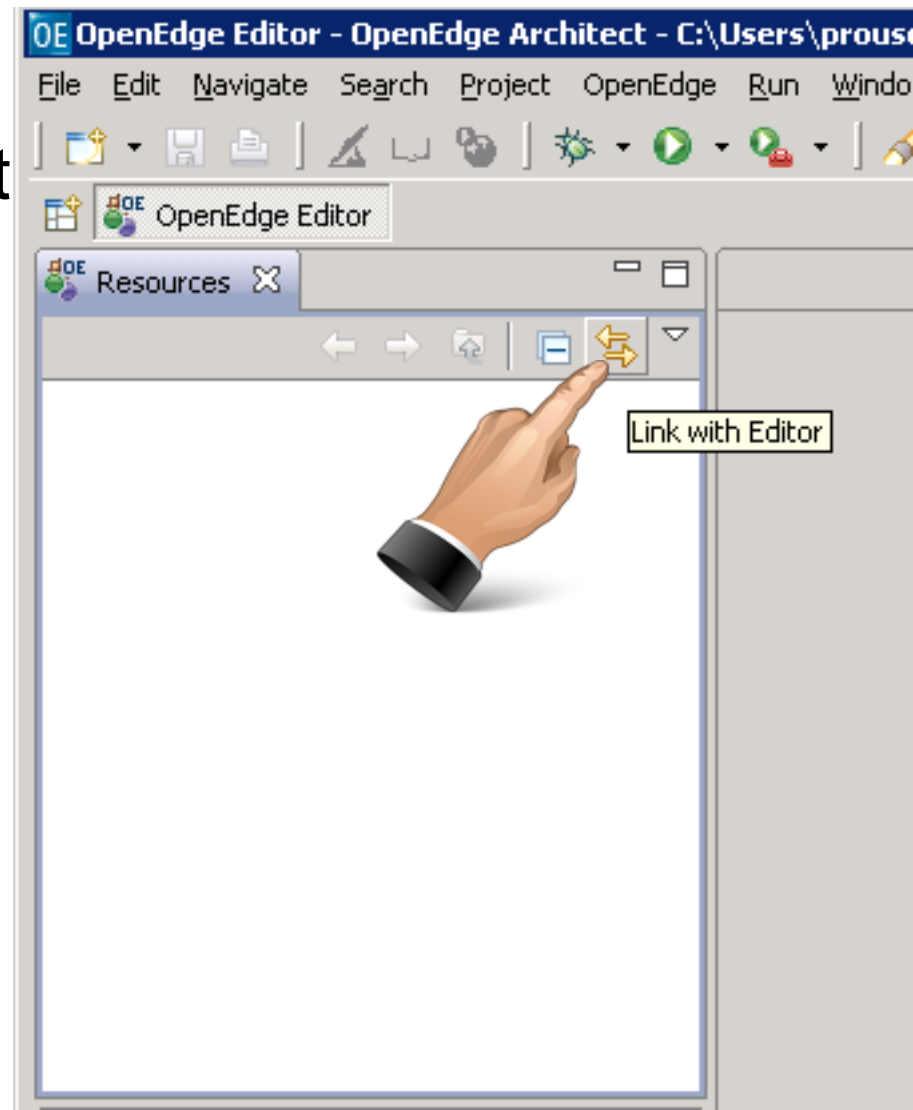
Workspace preferences in OEA

- OpenEdge Architect – Editor – Templates
 - Fix MES Template (Message statement)
 - mfe Template



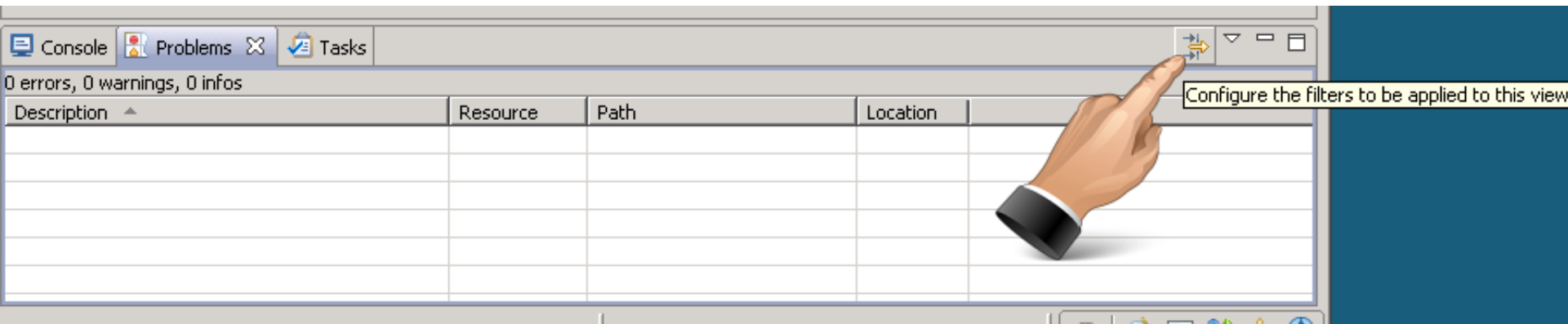
Link with Editor (Resource view)

- Keeps resource view (file browser) and current editor in sync when switching editor tabs



Error filters

- Use error filters dialog to configure filters
 - default (show all) usually not helpful on large projects
 - my preference is ‘selected element and its children’
 - or use working sets



Agenda

- A (short) review of OpenEdge Architect
- Understanding AppBuilder environments
- Creating a workspace
- (Personal) preferences in OpenEdge Architect
- **Creating a first project**
- Creating a run configuration
- When to use multiple projects and 10.2B's SharedAVM
- Some useful keyboard shortcuts

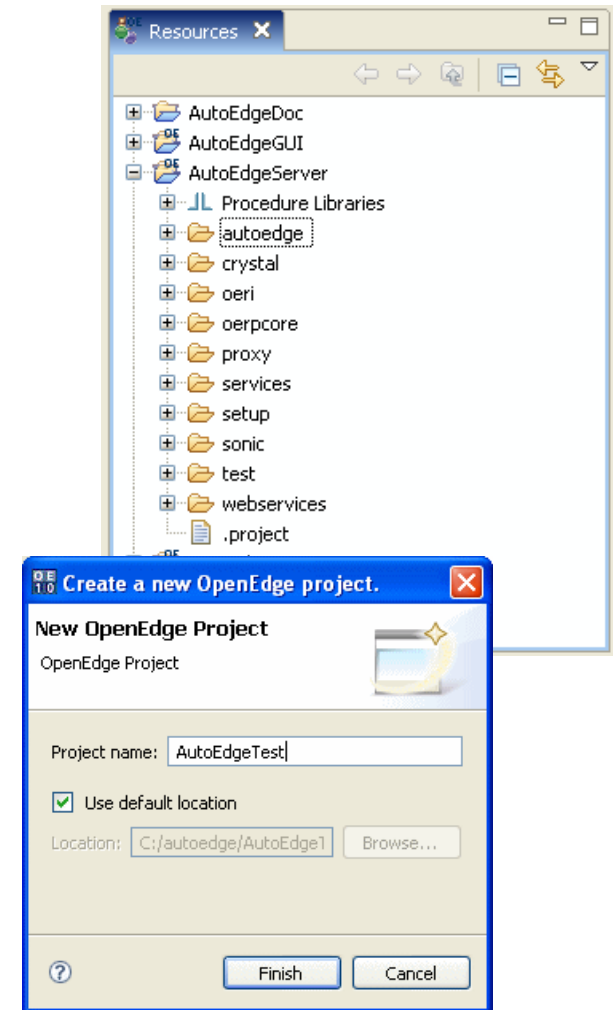
Projects in OpenEdge Architect

What is a Project?

- collection of folders and files and some meta data

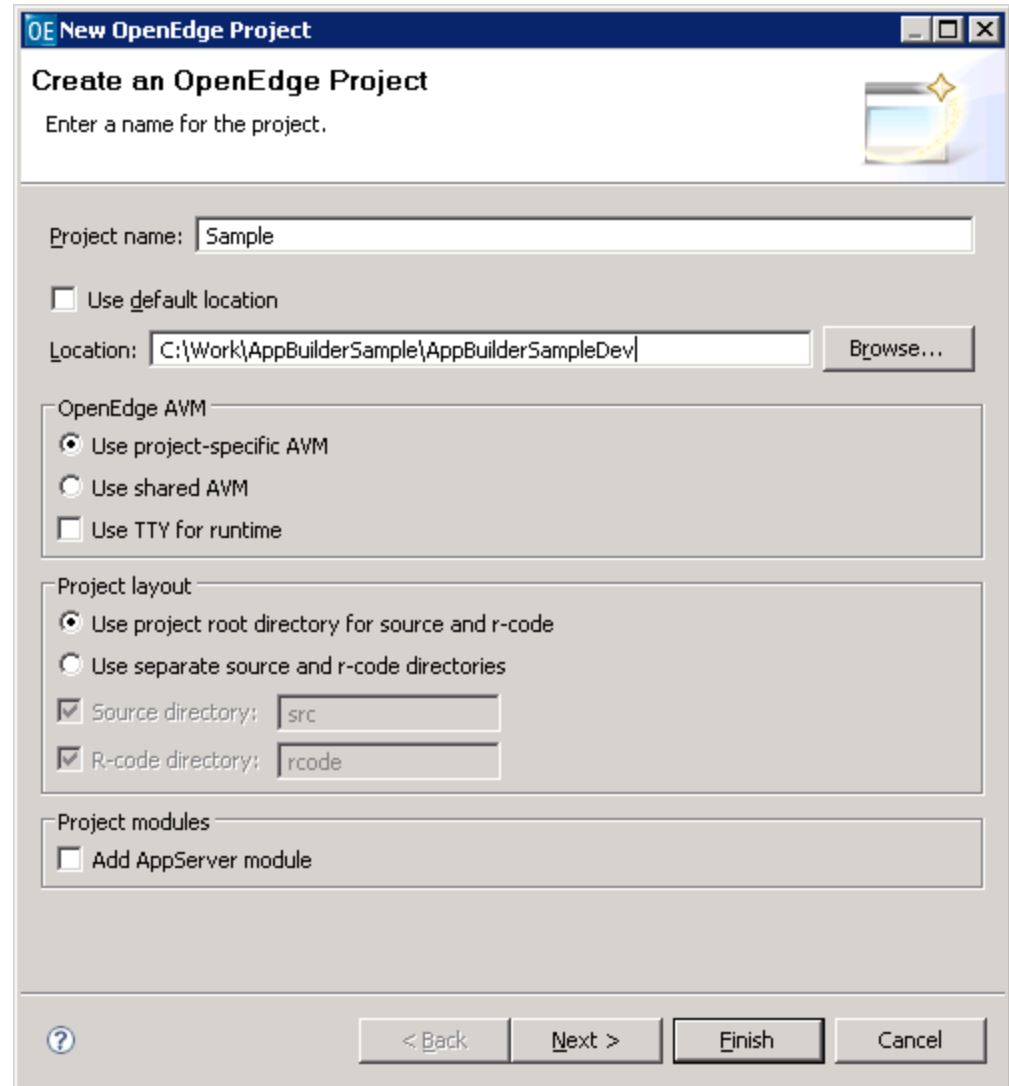
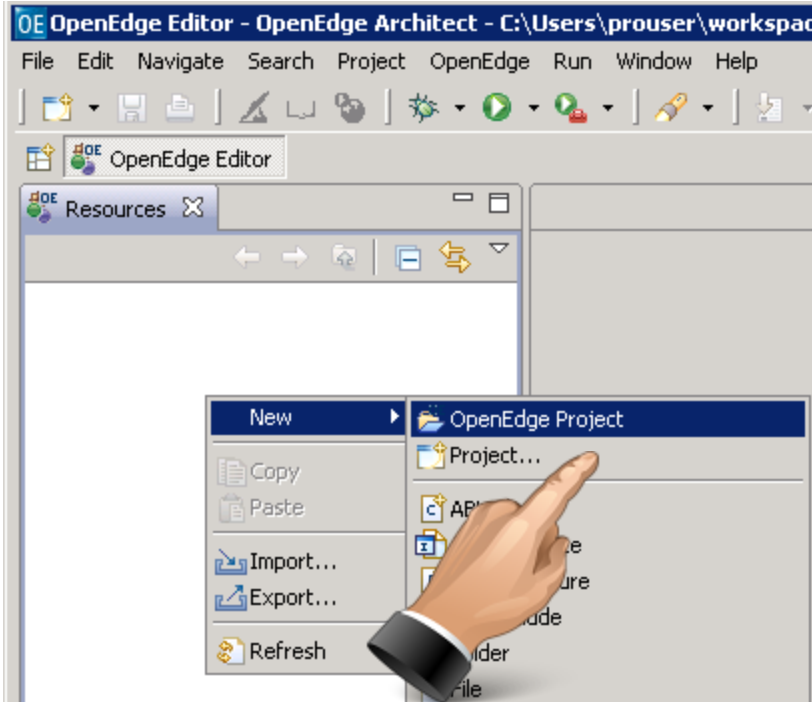
What is a Project Type?

- enables different functionalities i.e. OpenEdge, Sonic etc...



Creating a project

- A project is required to work with files (aka resources) in Eclipse
- Different natures of project
 - OpenEdge project: Ability to compile ABL source code
 - project: good to maintain text files (ini, pf)
- Projects cannot be nested
- Projects can be opened and closed in OEA
- Projects can be in more than a single workspace

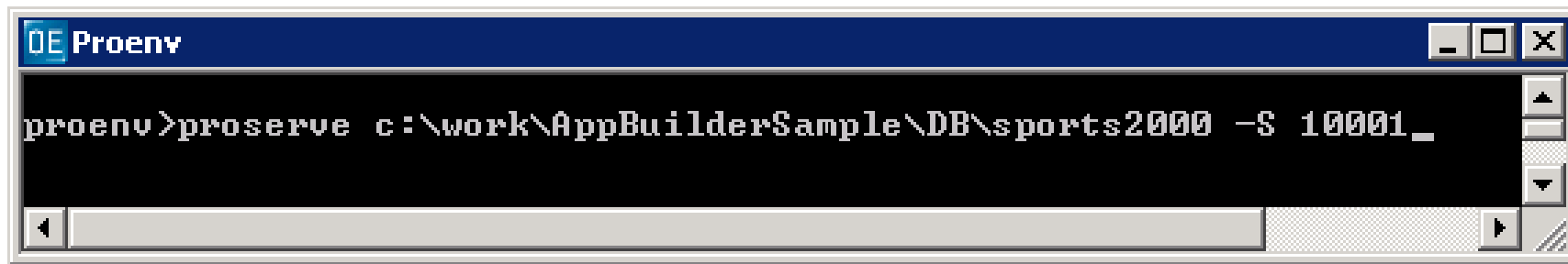


Task 1

- Create an “OpenEdge Project”
- ***Don't*** use default location, use
c:\work\AppBuilderSample\AppBuilderSampleDev
- **Don't enter anything on PROPATH and Database yet!**
- Open c:\work\AppBuilderSample\ini\progress.ini
- Use project properties to setup propath like in ini file
 - Use “Add Workspace Directory” for relative PROPATH references

Task 2

- Start a database server from “proenv” Icon

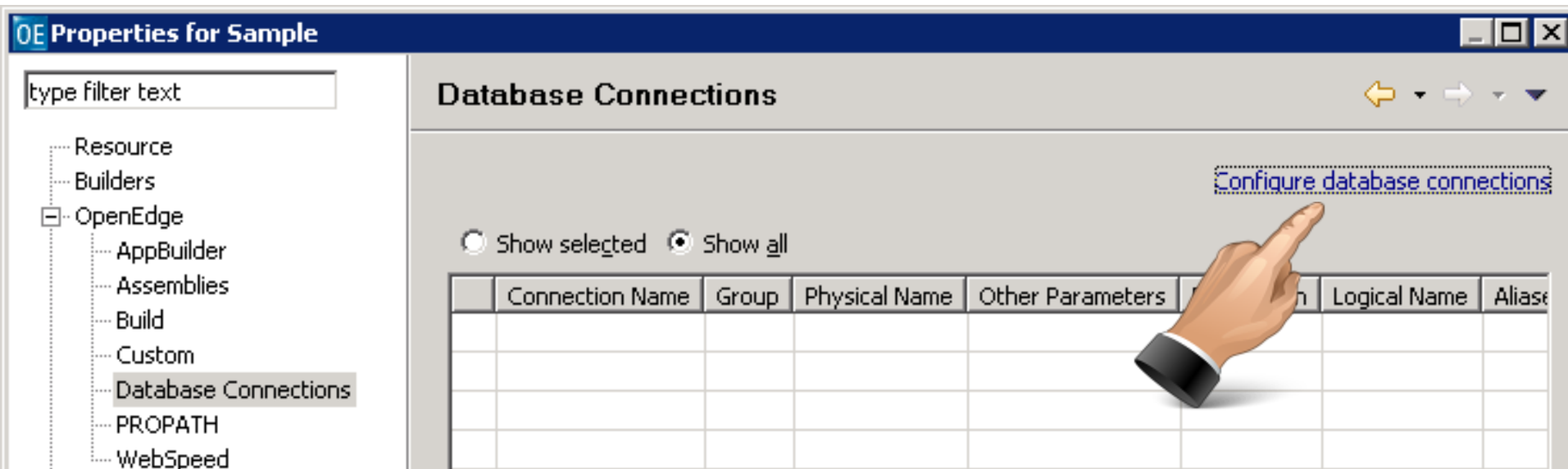


```
Proenv
proenv>proserve c:\work\AppBuilderSample\DB\sports2000 -S 10001_
```

- Modify AppBuilder Icon Desktop to not use -1 (hint use `-S 10001` instead)
- Start “AppBuilder Sample” icon

Task 3

- Create a connection profile in OpenEdge Architect for the new database using the Properties Dialog of the Project

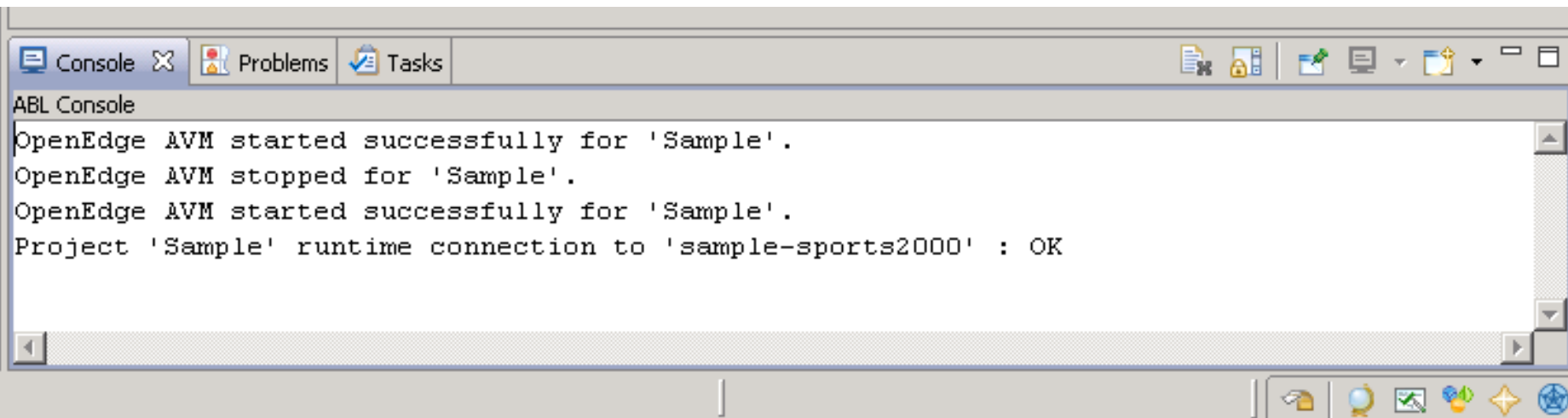


Task 3

- Click on “Configure database connections”
- Click on “New” button
- Connection name: **sports2000-sample**
- Physical name: **sports2000** (used for the connect statement)
- Service/Port **10001**
- Hit “Next”, “Next” and “Finish”, then “Ok”
- Make sure to toggle “**sports2000-sample**”
- Hit “Ok”

Task 3

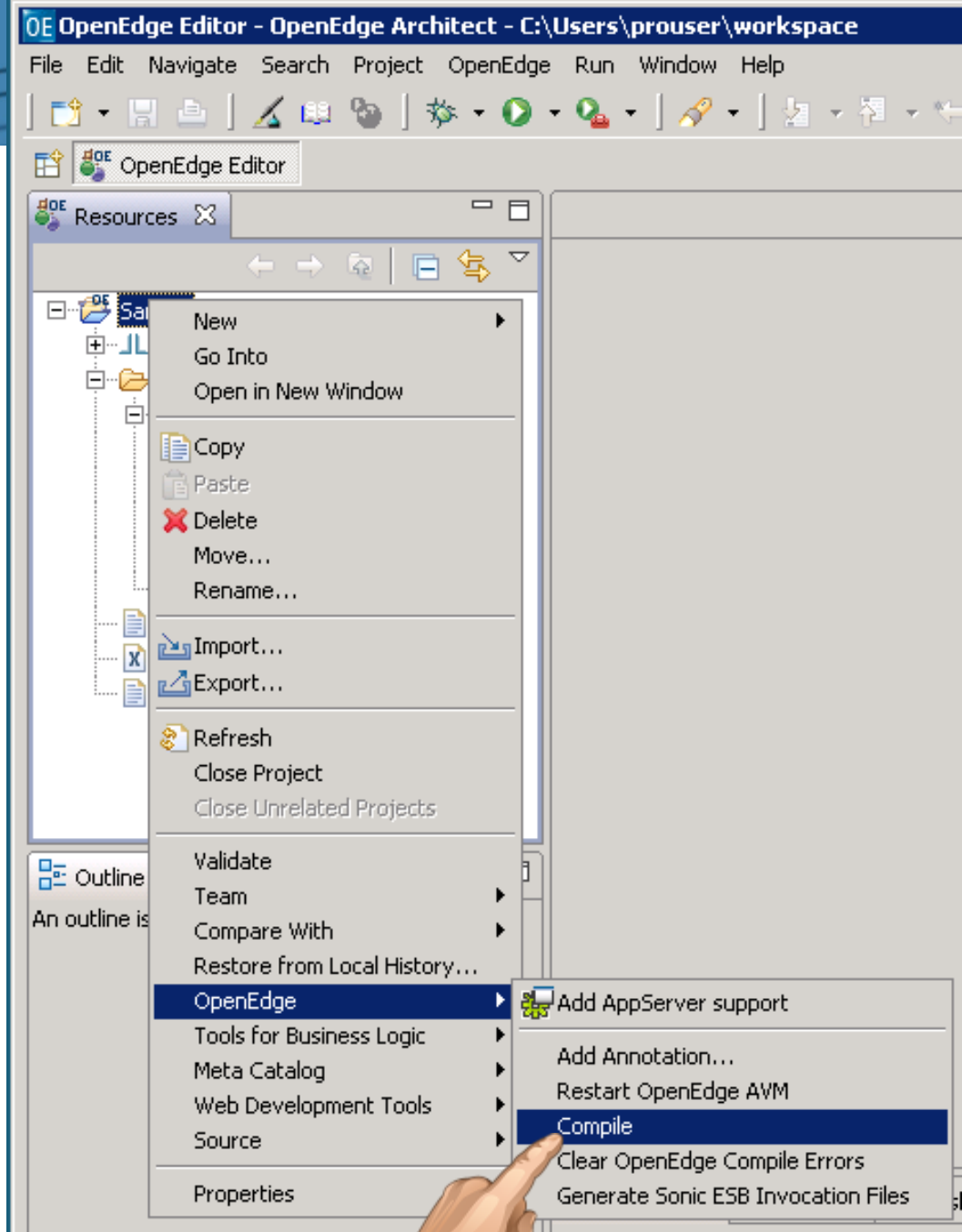
- OpenEdge AVM will restart
- Ensure the runtime connection is OK



```
ABL Console
OpenEdge AVM started successfully for 'Sample'.
OpenEdge AVM stopped for 'Sample'.
OpenEdge AVM started successfully for 'Sample'.
Project 'Sample' runtime connection to 'sample-sports2000' : OK
```

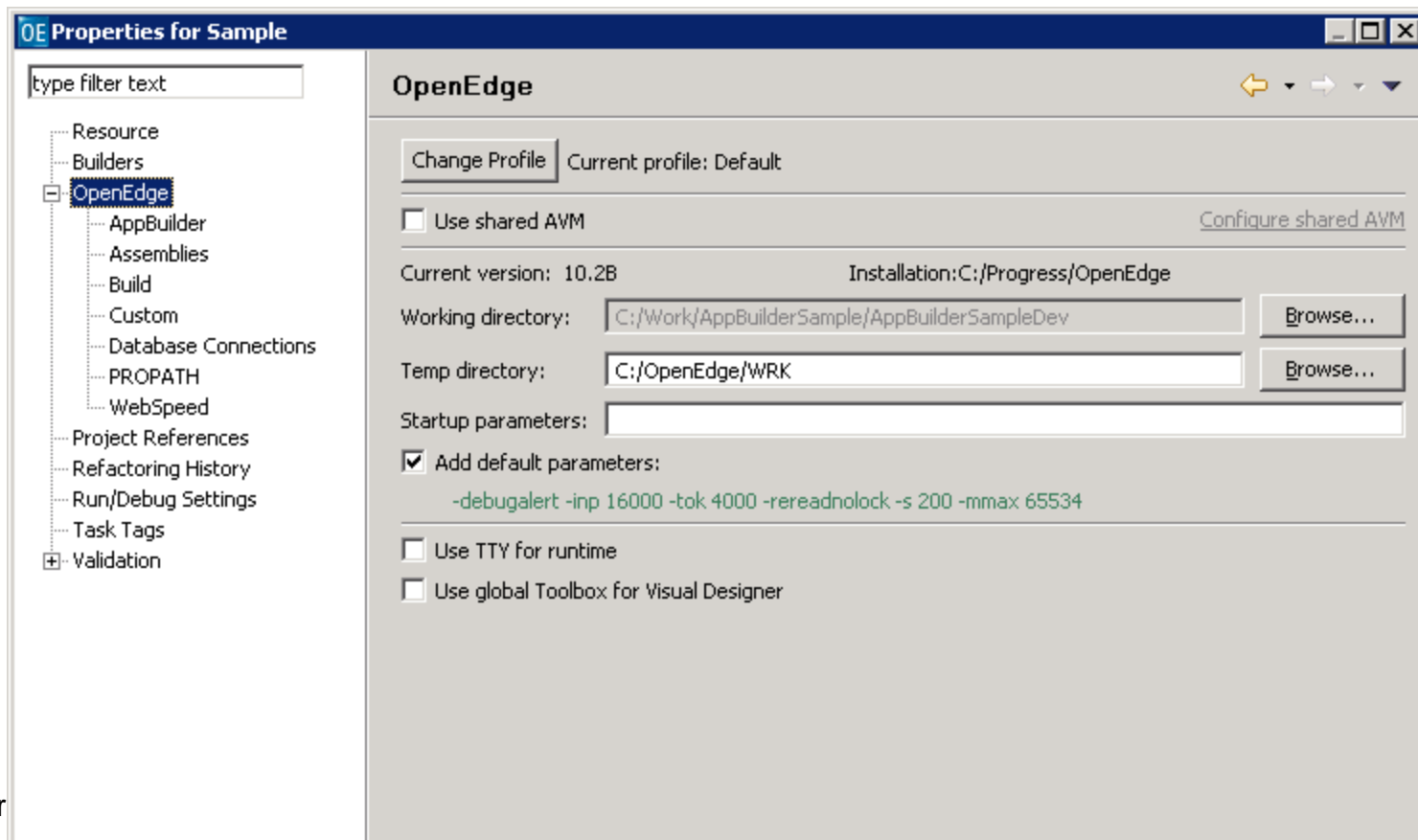
Task 4

- Compile the app
- Make sure there are no errors (no red X in the icon)



Extra Task

- Review details of Project properties dialog, familiarize with the options



Agenda

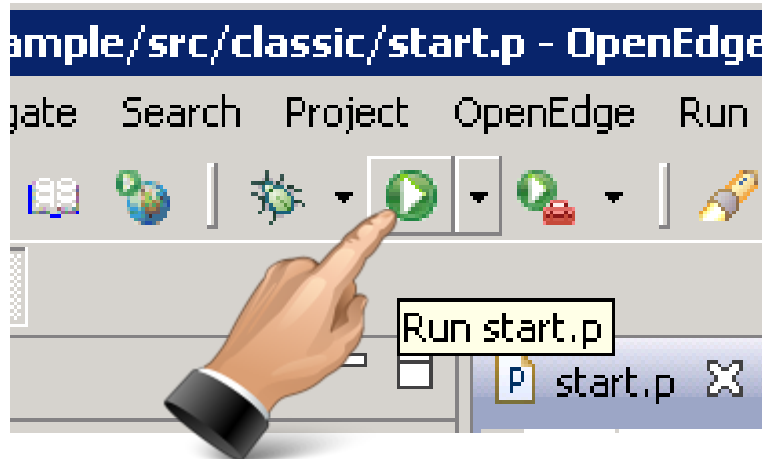
- A (short) review of OpenEdge Architect
- Understanding AppBuilder environments
- Creating a workspace
- (Personal) preferences in OpenEdge Architect
- Creating a first project
- **Creating a run configuration**
- When to use multiple projects and 10.2B's SharedAVM
- Some useful keyboard shortcuts

Run configurations

- A run configuration defines how OpenEdge Architect launches your source code to test (and debug)
- Application can be executed in a new AVM (default) or the Project runtime (not recommended)
- New AVM for launch requires DB server
- By default the project settings will be copied to the run configuration
- **.ini file is NOT responsible for PROPATH**

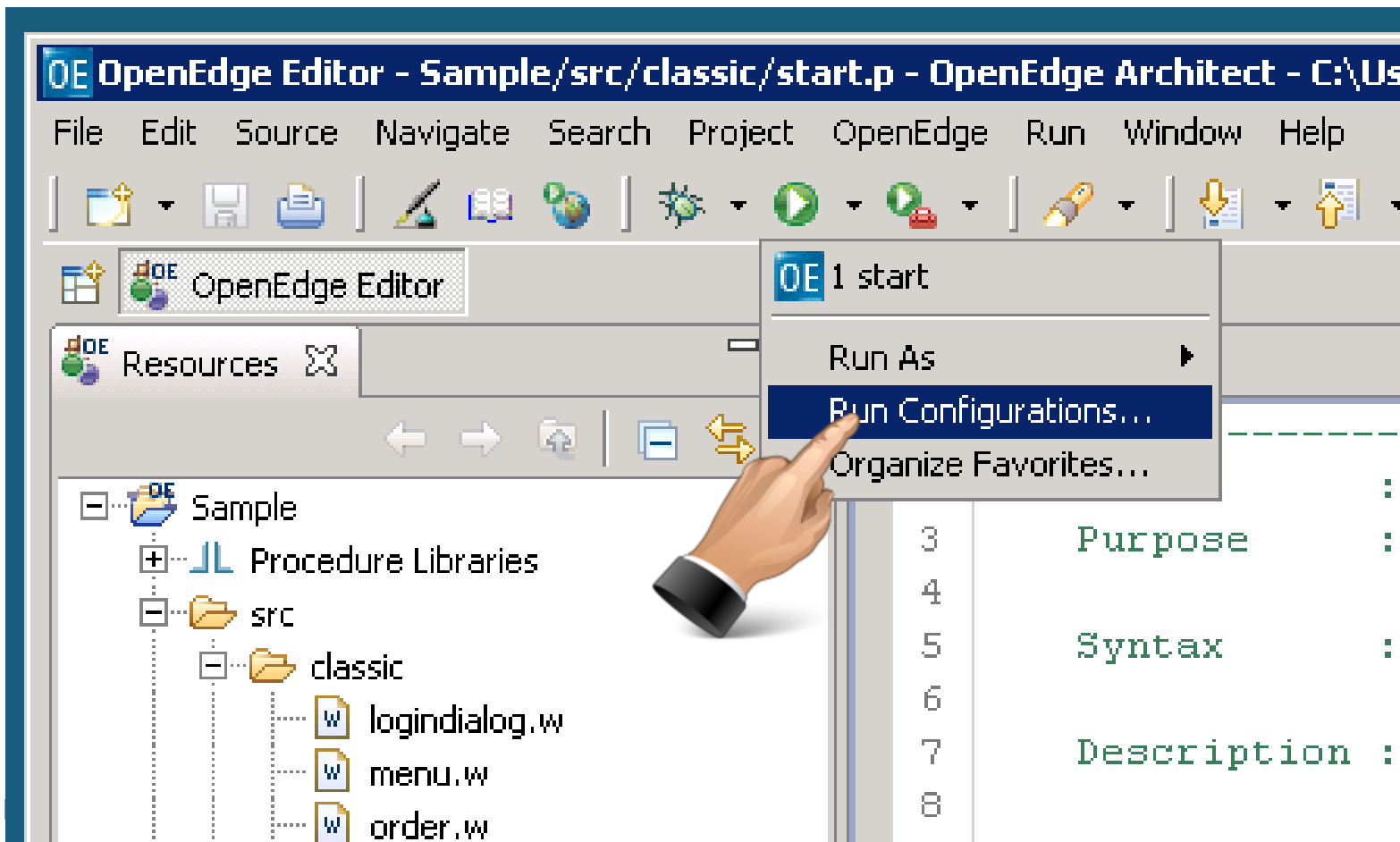
Task 5

- Create a default Run Configuration by opening “start.p” in the src/classic folder.
- Hit the Run button



Task 6

- Open “Run Configurations” Dialog



Task 6

OE Run Configurations

Create, manage, and run configurations

Create a configuration to launch an OpenEdge application.

type filter text

- HTTP Preview
- Java Applet
- Java Application
- JET Transformation
- OE OpenEdge Application
 - OE start
- OpenEdge AppServer

Name: start

OE Main Startup PROPATH Databases ABL Culture Performance Logging >>2

Project: Sample [Browse...] [Copy Project Settings...]

Startup program:
 Run this program Run selected program in workspace
src\classic\start.p [Workspace...] [File System...] [Variables...]

Working directory: C:\Work\AppBuilderSample\AppBuilderSampleDev [Workspace...] [File System...] [Variables...]

OpenEdge AVM

- Use OpenEdge project runtime
- Start new OpenEdge AVM

OpenEdge version: 10.2B

- Use TTY for runtime
- Batch mode
- Automatically start this launch configuration
- Automatically restart this launch configuration

Shared File

- A Shared File may be used to distribute Run Config to team members (.launch file checked in to SCM)

OE Run Configurations
Create, manage, and run configurations
Create a configuration to launch an OpenEdge application.

Name: start

Save as:
 Local file
 Shared file: \\Sample

Display in favorites menu:
 Run
 Debug

Console Encoding:
 Default - inherited (Cp1252)
 Other ISO-8859-1

Agenda

- A (short) review of OpenEdge Architect
- Understanding AppBuilder environments
- Creating a workspace
- (Personal) preferences in OpenEdge Architect
- Creating a first project
- Creating a run configuration
- When to use multiple projects and 10.2B's SharedAVM
- Some useful keyboard shortcuts

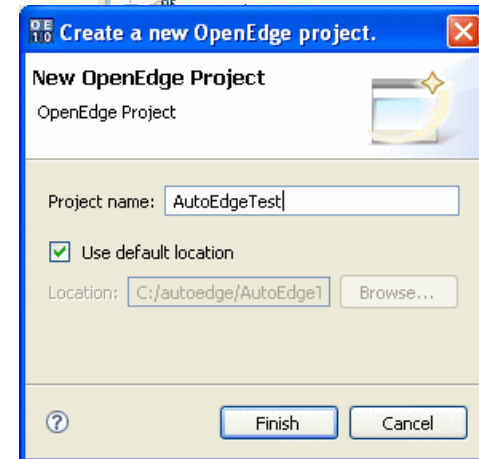
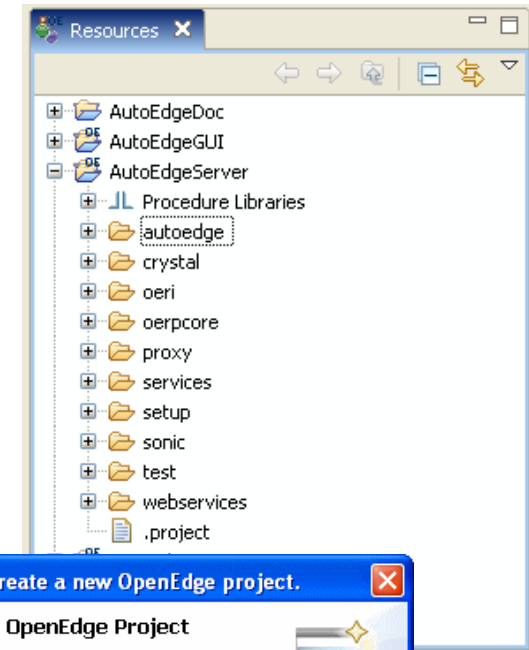
Projects in OpenEdge Architect

Why use Projects?

- Modularity
- builds, version management, sharing

How to structure projects?

- By Application modules e.g. Order Entry
- By application layers e.g. server side, client side, shared code etc...
- By different client types e.g. Web, GUI
- By technology e.g. ABL, .NET



Multiple projects

- A project defines a unit of source code
- When using multiple projects the source code in those those projects may be
 - related (framework code, application modules)
 - or not (different applications, different releases, stages like dev, test)
- Projects can be part of multiple workspaces

Shared AVM

- New feature of OpenEdge Architect 10.2B
- Allows more than one project to use the same AVM, save system resources like memory and number of DB connections
- A workspace can have a maximum of one (!) Shared AVM, but many private AVMs
- Configuration of Shared AVM in workspace configuration, not project properties

type filter text

- + General
- + Help
- + Install/Update
- + JavaScript
- + JET Transformations
- OpenEdge Architect
 - + Advanced
 - Database Connections
 - Debug
 - + Editor
 - + Meta Catalog
 - Server
 - Shared AVM**
 - AppBuilder
 - Assemblies
 - Database Connectic
 - Projects
 - PROPATH
 - Startup
 - + Tools for Business Logic
 - Views
 - Visual Designer
- + Progress
- + Progress DB Navigator
- + Run/Debug
- + Server
 - Service Policies

Shared AVM



Current version: 10.2B

Installation: C:/Progress/OpenEdge

Working directory: C:\Users\prouser\workspace\sharedavm

Browse...

Temp directory: C:\OpenEdge\WRK

Browse...

Startup parameters:

Add default parameters:

`-debugalert -inp 16000 -tok 4000 -rereadnolock -s 200 -mmax 65534`

Use TTY for runtime

Use global Toolbox for Visual Designer

Import Working Directory as Project



OK

Cancel

Shared AVM

- Advantage: Central configuration of Databases, Propath for all projects
- Useful when designing a single application in more than one project
- Working directory may be imported as a project
 - simple access to files
- Working directory usually not part of a project
- Projects need to be part of PROPATH to run and compile properly

Agenda

- A (short) review of OpenEdge Architect
- Understanding AppBuilder environments
- Creating a workspace
- (Personal) preferences in OpenEdge Architect
- Creating a first project
- Creating a run configuration
- When to use multiple projects and 10.2B's SharedAVM
- **Some useful keyboard shortcuts**

A selection of keyboard shortcuts

- Ctrl-Shift-R: Open Resource
- Ctrl-O: Quick Outlook in code editor
- Ctrl dot: Toggle between errors in code editor
- Ctrl-Shift-C: Check syntax
- Ctrl-S: Safe
- Ctrl-3: Open view, menu item, editor, ... (almost everything)
- Alt-Shift-P, Alt-Shift-F: New procedure, function
- Alt-Shift-M, Alt-Shift-Y: New method, new prop.

Ctrl-Shift-L

- Lists more shortcuts
- Not all may be relevant to OpenEdge Architect

Activate Editor	F12
Add Constructor	Alt+Shift+C
Add Constructors from Super Class	Alt+Shift+S
Add Destructor	Alt+Shift+R
Add Event	Alt+Shift+E
Add Function	Alt+Shift+F
Add Method	Alt+Shift+M
Add Procedure	Alt+Shift+P
Add Property	Alt+Shift+Y
Add Static Constructor	Alt+Shift+T
Backward History	Alt+Left
Build All	Ctrl+B
Check syntax	Ctrl+Shift+C
Close	Ctrl+W
Close All	Ctrl+Shift+W
Collapse	Ctrl+Numpad_Subtract
Collapse All	Ctrl+Shift+Numpad_Divide
Content Assist	Ctrl+Space
Context Information	Ctrl+Shift+Space
Copy	Ctrl+C
Copy Lines	Ctrl+Alt+Down
Correct Case	Ctrl+Shift+L

Press "Ctrl+Shift+L" to open the preference page.

Questions



Thank you!