

New England Progress Users Group Spring 2010

Getting Started with OpenEdge GUI for .NET

Mike Fechner, Consultingwerk Ltd.

Consultingwerk Ltd.

- Independent IT Consulting organization, Progress Consulting Partner
- Focusing on OpenEdge und .NET
- Consulting, Conception, Coaching, Development
- 20 Years of experience in Progress
- Progress, OpenEdge, ADM2, Dynamics, OERA, Sonic, ...
- OpenEdge GUI for .NET Early Adoptor
- Customers in Germany, Europa und USA

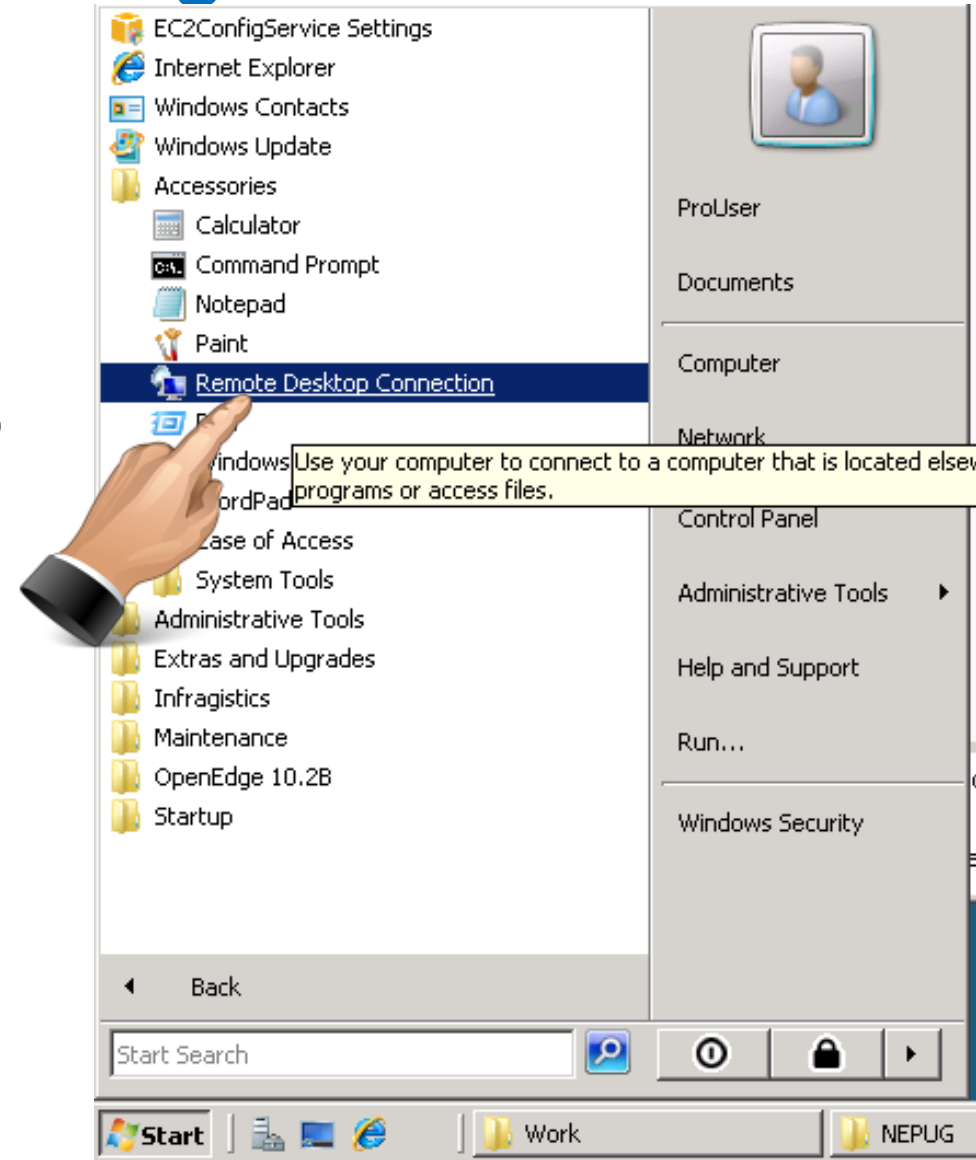
OpenEdge GUI for .NET solutions

- WinKit
- SmartComponent Library
- Dynamics4.NET


- All tools can be used independently or in combination!

Accessing the cloud image



- Remote Desktop connection
- Hostname (ec2.....amazonaws.com) received via Email
- User: ***prouser***
- Password: ***4prouser***



Agenda

- 08:00 – Install and Setup
- 09:00 – Welcome
- 09:15 – OE GUI for .NET Overview and strategies
- 10:30 – Migrating from AppBuilder to OEA 
- 11:30 – Lunch (Pizza for local attendees), free choice for remote attendees

Agenda

- 13:00 – Working with OE10
- 14:15 – A simple sample 
- 15:30 – Working with embedded windows 

WebEx Users

- Your phone will usually be muted
- Tom Bascom will be monitoring the WebEx chat panel
- Please indicate immediately when you have questions or issues
- In theory I can connect to your cloud image (if time allows)

Local attendees

- Just ask!

Have fun

